



# Year 10 Parent Information Evening

# Introduction from the Principal...

- Run towards what you enjoy and what you are good at.
- You are now experiencing your subject selection from last year
- An ATAR is for some for tertiary admission it is not a measure worth.
- A QCE is for all.
- Use your selfish intent and selfless intent.
- Your school experience is more than a number.



# Outline of Tonight's Information Session ...

- Principal Welcome
- Deputy Principal Introducing the Year 10 Team and their roles
- Focus of Year 10 and Key Events
- *Parent Survey – what are you keen to hear about at our next sessions?*
- Inclusion Support
- ACCESS at ACSHS
- *Parent Q & A*



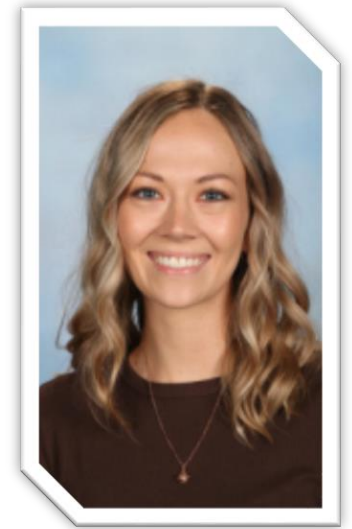
# Who Are The Year 10 Team & What Are Their Roles?



**Kym Everett**  
Deputy Principal



**Mr Charlie Rodger**  
Head of Student Services  
Year 9 & 10



**Ash Koedam**  
Year 10  
Inclusion Case Manager



**Chloe Tarr**  
Guidance Officer  
Year 8, 10, 12



**Emma Commolati**  
Year Level Coordinator



# Wrap Around Support at A.C...

## Learning Connections

**Deputy Principal:** Kym Everett [kever19@eq.edu.au](mailto:kever19@eq.edu.au)

**Year 10 Inclusion Mentor:** Ash Koedam [amkoe0@eq.edu.au](mailto:amkoe0@eq.edu.au)

*Our team of teacher aides – allocated to students with extensive and substantial needs*

### **Support Provisions 2025**

- **Case Management for students with substantial and extensive needs**
- **Small classes**
- **Teacher Aide support**
- **Tutorials** – in year 10 this is supported by medical documentation
- **AARA** – made by families/facilitated by case managers/DP
- **Strength Based Profiles**
- **Differentiation and Reasonable Adjustments**



# Wrap Around Support at A.C...

Social Worker Role (Monday-Thursday – Access Hub):

- To assess students for barriers to academic and social success.
- Advocate for student needs.
- Provide advocacy and referrals to community or government organisations
- Provide support to students and their families
- Contact: [hwebb97@eq.edu.au](mailto:hwebb97@eq.edu.au)



# Focus of Year 10 and Key Events



# Subject Choices and Pathways

- Students are now experiencing their subject choices at the end of last year – lots of changes but hopefully settled well
- Subject selection for Year 11 happens during the SET Planning process in August
- The results from semester 1 inform this process
- Success in the Year 10 subject indicates likely success in the matching year 11/stage 1 subject
  - so a C in General Legal Studies Preparation indicates likely success in Legal Studies in Year 11





## Prerequisites For Success in Senior Subjects

Prerequisites are requirements from each faculty for the successful completion of the subject. Whilst not mandatory, the school strongly recommends that students use them as minimum requirements for the required subject outcomes to be achieved.

QCAA GENERAL SUBJECTS		
Senior Subject	Prerequisites	Advised
Accounting	C in Year 10 English required	C in Year 10 Mathematics advised
Ancient History	C in Year 10 History required	
Biology	C in Year 10 Science required	
Business	C in Year 10 English required	C in Year 10 Mathematics advised
Chemistry	C in Year 10 Science required	B in Year 10 Science advised
Dance	C in Year 10 English required	Previous studies advised
Design	C in Year 10 Design and Technologies required	
Digital Solutions	C in Year 10 English required	C in Year 10 Digital Technologies advised
Drama	C in Year 10 English required	Previous studies advised
English	C in Year 10 English required	
Film, Television & New Media	C in Year 10 English required	Previous studies advised



Food and Nutrition	C in Year 10 Food Specialisations required	
General Mathematics	C in Year 10 Mathematics required	
Geography	Completion of Year 10 History required	
Health	C in Year 10 HPE required	
Japanese	B in Year 10 Japanese required	
Legal Studies	C in Year 10 English required	
Literature	B in Year 10 English required	
Mathematical Methods	B in Year 10 Mathematics required	
Modern History	C in Year 10 History required	
Music	C in Year 10 English required	Previous studies advised to Grade 4 AMEB
Physical Education	C in Year 10 HPE required	
Physics	B in Year 10 Science required	
Psychology	C in Year 10 Science required	
Specialist Mathematics	B in Year 10 Mathematics required	
Visual Art	C in Year 10 English required	Previous studies advised



# Senior Education and Training Planning – SET Plan

- Schools ensure students develop a SET plan in partnership with their parents by the end of Year 10.
- During the SET planning process, students identify their intended learning option to be achieved through the compulsory participation phase.
- Students are supported to acquire the knowledge and skills to develop their SET plan and to review and revise it, where necessary, throughout Years 11 and 12.
- During the compulsory participation phase, the school ensures that learning opportunities are provided in accordance with the SET plan.
- The SET plan is reviewed and updated as necessary and transferred when required



# SET Plan Process at ACSHS

- In August SET Plan meetings are managed by HODS and HOSS
- GOs and DPs are on hand to assist
- Students book in using Daymap at their **preferred person**, at their **preferred time between 7am and 6pm on 13 August**
- Students only attend for their scheduled meetings on those days
- **Parents are required to attend. No meetings happened with just the student – followed up at a later time**
- Inclusion team held afternoon parent information session
- Preparation work had been completed during Essential Skills Program lessons



# Queensland Certificate of Education

## Generally – but more later in the year

- QCE requires 20 points in a particular pattern
- Each subject passed = 1 point
  - If a student passes VAP for each unit = 4 points
- VET Certificates = range of points
- 12 core points = passing 4 units of 3 subjects, or VET certificates
- **Our Essential Skills Program allows Year 10 students to have “banked” 6 points**
  - **Certificate I in Work Place Skills = 2 points**
  - **Certificate II Foundation Skills = 4 points**



# Essential Skills Program - Charlie

- Runs every Wednesday during Period 4
- Resources are on Qlearn
- Students complete a Certificate I in Career Education, which is worth one QCE point
- Students complete 4 assessments throughout the year to achieve this
- SET Plan preparation is also undertaken during this time, including subject and pathways talks

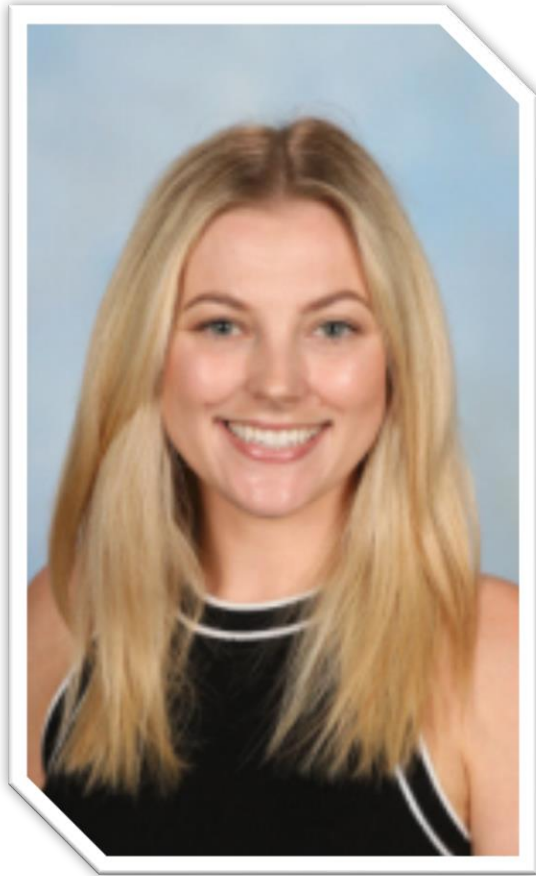


# Parent Survey

## What would you like our future sessions to focus on?

ACSHS Yr 10 Information Session





# Chloe Tarr Guidance Officer

- **ACCESS Team**
- **Pathways Day**
- **AARA Applications**





# Pathways Day

- Wednesday 21<sup>st</sup> May
- Combined with **Open Day**
- Yr 10 Students & Parents encouraged to attend
- Pathways Presentation links to SETP
- Important information for choosing Senior Subjects

ADF  CAREERS



**QUT**



**THE UNIVERSITY  
OF QUEENSLAND**  
AUSTRALIA



# Access Arrangements and Reasonable Adjustments - AARAs

- An AARA is required anytime a student requires an extension to the due date of assessment and/or a change of the access arrangements of the assessment piece, for example additional time, resources, seating etc
- Students are responsible for applying for AARAs by submitting an AARA application and evidence to support the application.
- Requirements for AARAs become more specific in Years 11 and 12, but Year 10 is still a school based process.



# What does support look like?

- Inclusion Team – Ms Kym Everett, Deputy Principal Inclusion
- Year 10 Team – DP, GO, HOSS, YLC, LC Case Manager
  - Meet fortnightly
- Roll Class Teacher
- Same teacher for WAVE & ESE



**Meet the ACCESS Team**

 <b>Hannah Webb</b> Social Worker	 <b>Lindsay Bartlett</b> Guidance Officer Year 7, 9 & 11	 <b>Kym Everett</b> Deputy Principal Inclusion	 <b>Chloe Tarr</b> Guidance Officer Year 8, 10 & 12	 <b>Emma McNaughton</b> School-Based Youth Health Nurse (SBYHN)
 <b>Rebecca Smith</b> Defence Mentor	 <b>Lexi Daniels</b> First Nations Mentor	 <b>Dane Clemment</b> First Nations Support Officer	 <b>David Hockey</b> Chaplain	 <b>Nicole Kennedy</b> ACCESS Teacher Aide



# Study Skills Presentation

- In 2025, Year 10s will attend a study skills session during ESE (Period 4, Wednesday) in Term 2 presented by a partner university
- **Topics include;**
  - Importance of study
  - Coping mechanisms
  - Learning styles
  - Study tips
  - Exam preparation
  - Time management
  - Useful apps



# Tips for Year 10



- Pivotal year to try your best, to get into the subjects you want
- Doors start to open, effort matters
- Your report card is a great piece of evidence for a future employer
- Invest in developing a study plan now
- Always have an idea about where you are going
- Ask for help early and keep communicating with your significant people
- Friendship groups change, hang tight!



# Who To Contact If Parents or Students Have Questions...

- \* Kym Everett- *Year 10 Deputy Principal* [kever19@eq.edu.au](mailto:kever19@eq.edu.au)
- \* Chloe Tarr- *Year 10 Guidance Officer* [ctarr25@eq.edu.au](mailto:ctarr25@eq.edu.au)
- \* Charlie Rodger – *Year 10 Head of Student Services* [crodg32@eq.edu.au](mailto:crodg32@eq.edu.au)
- \* Ash Koedam - *Year 10 Inclusion Case Manger* [amkoe0@eq.edu.au](mailto:amkoe0@eq.edu.au)
- \* Emma Comollatti – *Year 10 Year Level Coordinator* [ecomom2@eq.edu.au](mailto:ecomom2@eq.edu.au)



**Any further  
questions –  
click on the  
link and send  
us a message**

Yr 10 Information Session -  
Questions (end of session)



# Question and Answer

